



Centre of
Excellence
in Teacher
Education

State of Teachers, Teaching and Teacher Education Report-2023

Teacher Eligibility Test: preliminary analysis from state data



Centre of
Excellence in
Teacher
Education

Secondary data: preliminary findings from State TET data

| Gender | Category | Paper-1 (Primary school) | | | Paper-2 (TGT, secondary school) | | |
|--------|-----------|--------------------------|-----------|---------------|---------------------------------|-----------|---------------|
| | | Appeared | Qualified | Percentage Q. | Appeared | Qualified | Percentage Q. |
| Female | GENERAL | 21462 | 1888 | 8.80 | 18537 | 2793 | 15.07 |
| | BC | 123899 | 32302 | 26.07 | 98614 | 38971 | 39.52 |
| | SC/ST/PWD | 61591 | 28196 | 45.78 | 43549 | 30565 | 70.19 |
| | Total | 206952 | 62386 | 30.15 | 160700 | 72329 | 45.01 |
| Male | GENERAL | 5487 | 679 | 12.37 | 4988 | 1171 | 23.48 |
| | BC | 58194 | 17540 | 30.14 | 49600 | 24158 | 48.71 |
| | SC/ST/PWD | 47805 | 21847 | 45.70 | 35601 | 25239 | 70.89 |
| | Total | 111486 | 40066 | 35.94 | 90189 | 50568 | 56.07 |
| Total | GENERAL | 26949 | 2567 | 9.53 | 23525 | 3964 | 16.85 |
| | BC | 182093 | 49842 | 27.37 | 148214 | 63129 | 42.59 |
| | SC/ST/PWD | 109396 | 50043 | 45.74 | 79150 | 55804 | 70.50 |
| | Total | 318438 | 102452 | 32.17 | 250889 | 122897 | 48.98 |

Qualified Marks for Gen- 60% and Above; BC- 50% and Above; SC/ST/PWD-40 % and Above

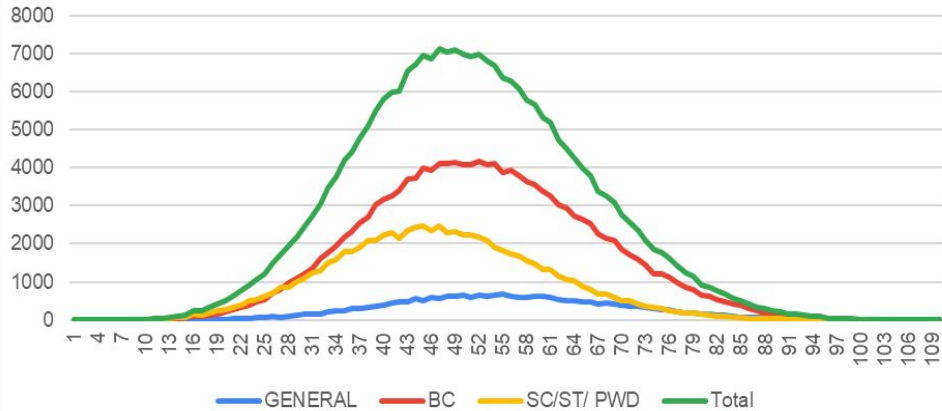


TET Data Analysis

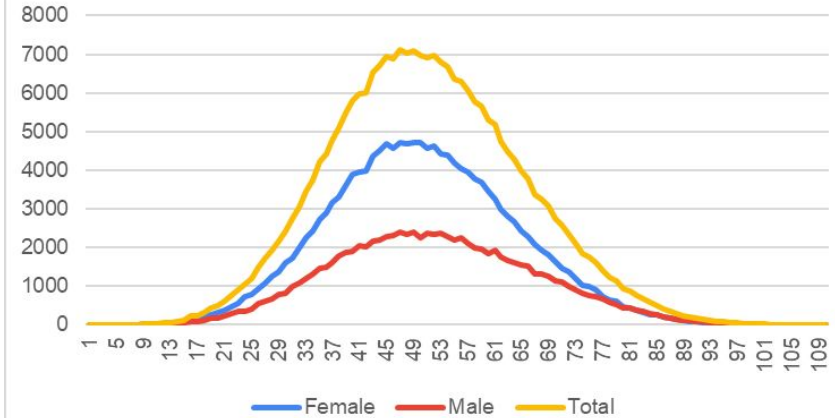
| Statistics | Paper-1 (Primary school) | | Paper-2 (TGT, secondary school) | |
|----------------------|--------------------------|-----------|---------------------------------|-----------|
| | Appeared | Qualified | Appeared | Qualified |
| N | 318437 | 102452 | 250889 | 122897 |
| Mean | 64.49 | 77.97 | 70.96 | 80.29 |
| Median | 63 | 78 | 70 | 80 |
| Std. Deviation | 13.953 | 11.328 | 14.014 | 11.235 |
| Range | 129 | 73 | 127 | 71 |
| Minimum (Out of 150) | 4 | 60 | 4 | 60 |
| Maximum (Out of 150) | 133 | 133 | 131 | 131 |

TET Data Analysis

Paper-1 (Primary school)

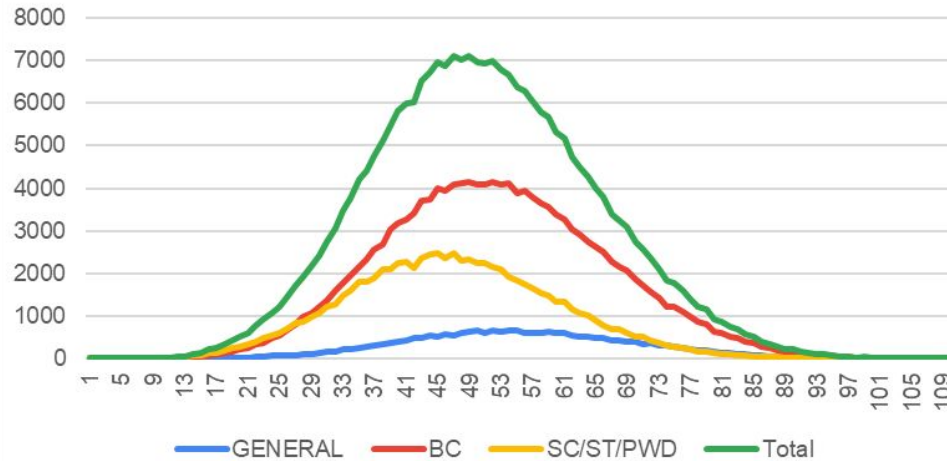


Paper-1 (Primary school)

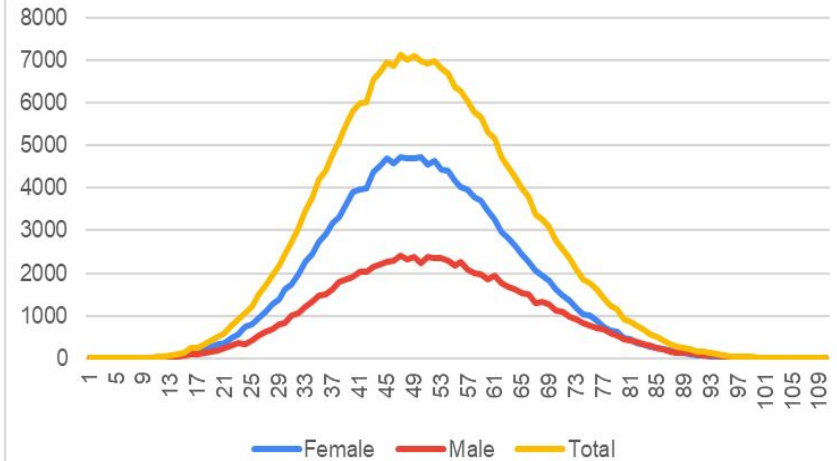


TET Data Analysis

Paper-2 (TGT, secondary school)



Paper-2 (TGT, secondary school)



TET Data Analysis

| Language | Paper-1 (Primary school) | | | Paper-2 (TGT, secondary school) | | |
|-------------------|--------------------------|-----------|---------------|---------------------------------|-----------|---------------|
| | Appeared | Qualified | Percentage Q. | Appeared | Qualified | Percentage Q. |
| BENGALI | 7 | 3 | 0.00 | 0 | 0 | 0 |
| GUJARATI | 2 | 0 | 0.00 | 0 | 0 | 0 |
| HINDI | 8282 | 3106 | 3.00 | 18488 | 4026 | 3.3 |
| KANNADA | 292 | 71 | 0.10 | 193 | 71 | 0.1 |
| MARATHI | 228 | 52 | 0.10 | 119 | 28 | 0 |
| TAMIL | 23 | 5 | 0.00 | 18 | 3 | 0 |
| REGIONAL LANGUAGE | 296397 | 95715 | 93.40 | 222242 | 117037 | 95.2 |
| URDU | 13207 | 3500 | 3.40 | 9752 | 1705 | 1.4 |
| SANSKRIT | 0 | 0 | 0.00 | 77 | 27 | 0 |
| Total | 318438 | 102452 | 100.00 | 250889 | 122897 | 100 |

TET Data Analysis

| Paper-1 (Primary school) | | | |
|---|----------|-----------|---------------|
| Education Qualifications | Appeared | Qualified | Percentage Q. |
| Graduation with at least 45% marks AND pass in B.Ed./Special Education or pursuing final year of B.Ed/Special Education | 187455 | 56061 | 54.70 |
| Intermediate / Senior Secondary with at least 45% marks AND pass in 2 - year Diploma in Elementary Education / 4-year B.El.Ed. / 2 - year Diploma in Education (Special Education) or pursuing final year D.El.Ed / D.Ed. | 92260 | 38900 | 38.00 |
| Intermediate / Senior Secondary with at least 40% marks AND pass in 2 - year Diploma in Elementary Education / 4-year B.El.Ed. / 2 - year Diploma in Education (Special Education) or pursuing final year D.El.Ed / D.Ed. | 12320 | 4947 | 4.80 |
| Graduation with at least 50% marks AND pass in B.Ed. / Special Education or pursuing final year B.Ed / Bachelor of Education (Special Education) | 19600 | 1516 | 1.50 |
| Intermediate / Senior Secondary with at least 50% marks AND pass in 2 - year Diploma in Elementary Education / 4-year B.El.Ed. / 2 - year Diploma in Education (Special Education) or pursuing final year D.El.Ed / D.Ed. | 5764 | 890 | 0.90 |
| Intermediate / Senior Secondary with at least 45% marks AND pass in 2 - year Diploma in Elementary Education / 4-year B.El.Ed. / 2 - year Diploma in Education (Special Education) or pursuing final year D.El.Ed / D.Ed. | 1037 | 137 | 0.10 |
| Total | 318438 | 102452 | 100.00 |



TET Data Analysis

| Paper-2 (TGT, secondary school) | | | |
|--|----------|-----------|---------------|
| Education Qualifications | Appeared | Qualified | Percentage Q. |
| B.A./B.Sc./B.Com., with at least 45% marks. AND pass B.Ed / B.Ed-Special Education or pursuing final year of B.Ed. / Special Education | 165503 | 89171 | 72.60 |
| B.A./B.Sc./B.Com., with at least 40% marks. AND pass in B.Ed/ B.Ed -Special Education or pursuing final year B.Ed./Special Education | 33875 | 18510 | 15.10 |
| Graduation with language concerned as one of the optional subjects OR Bachelor of oriental language OR Graduation in literature OR Post Graduation in language concerned AND Language Pandit Training Certificate/B.Ed with language concerned as one of the Methodologies, in respect of Language Teachers. | 21900 | 6739 | 5.50 |
| B.E/B.Tech with at least 45% marks and Pass in B.Ed. or B.Ed. Special Education or pursuing final year of B.Ed. /Special Education | 7719 | 4377 | 3.60 |
| B.A./B.Sc./B.Com., with at least 50% marks. AND pass in B.Ed / B.Ed-Special Education or pursuing final year B.Ed. / Special Education. | 14379 | 2518 | 2.00 |
| B.A./B.Sc./B.Com., with at least 50% marks. AND pass in B.Ed/ B.Ed -Special Education or pursuing final year B.Ed./ Special Education. | 5572 | 1018 | 0.80 |
| 4-year B.A.Ed/B.Sc.Ed., with at least 45% marks. | 700 | 306 | 0.20 |
| 4-year B.A.Ed/B.Sc.Ed., with at least 50% marks. | 95 | 13 | 0.00 |
| B.E/B.Tech with atleast 50% marks and Pass in B.Ed. or B.Ed. Special Education or pursuing final year B.Ed. /Special Education. | 1145 | 245 | |
| Total | 250889 | 122897 | 100.00 |



TET Data Analysis

Paper-1 (Primary school)

| Professional Qualification | Appeared | Qualified | Percentage Q. |
|---|----------|-----------|---------------|
| B.Ed | 205167 | 57236 | 55.90 |
| B.Ed -Special Education | 1888 | 341 | 0.30 |
| B.El.Ed. | 6790 | 1348 | 1.30 |
| D.Ed/D.El.Ed | 102649 | 43134 | 42.10 |
| Diploma in Education (Special Education). | 1942 | 392 | 0.40 |
| Total | 318438 | 102452 | 100.00 |

Paper-2 (TGT, secondary school)

| Education Qualification | Appeared | Qualified | Percentage Q. |
|-------------------------|----------|-----------|---------------|
| 4-year B.A.Ed/B.Sc.Ed., | 795 | 319 | 0.30 |
| B.Ed | 232550 | 117967 | 96.00 |
| B.Ed -Special Education | 2142 | 784 | 0.60 |
| LPT | 15401 | 3827 | 3.10 |
| Total | 250889 | 122897 | 100.00 |



TET Data Analysis: Works going on

- **Profile of Appeared and Qualified Candidates:**

Age

Rural-Urban Background

Type of Institute where they have done their professional degrees (Private, Govt, Aided)

- **Section and Sub-Section wise results:**

Paper-1: Child Development and Pedagogy, Language 1 and 2, Mathematics and Environment Studies

Paper-2: Child Development and Pedagogy, Language 1 and 2, Mathematics and Science, Social Studies, Environment Studies

- **Question Paper Analysis:**

Using Revised Bloom's Taxonomy, Lee Shulman and NCFTE Document approach